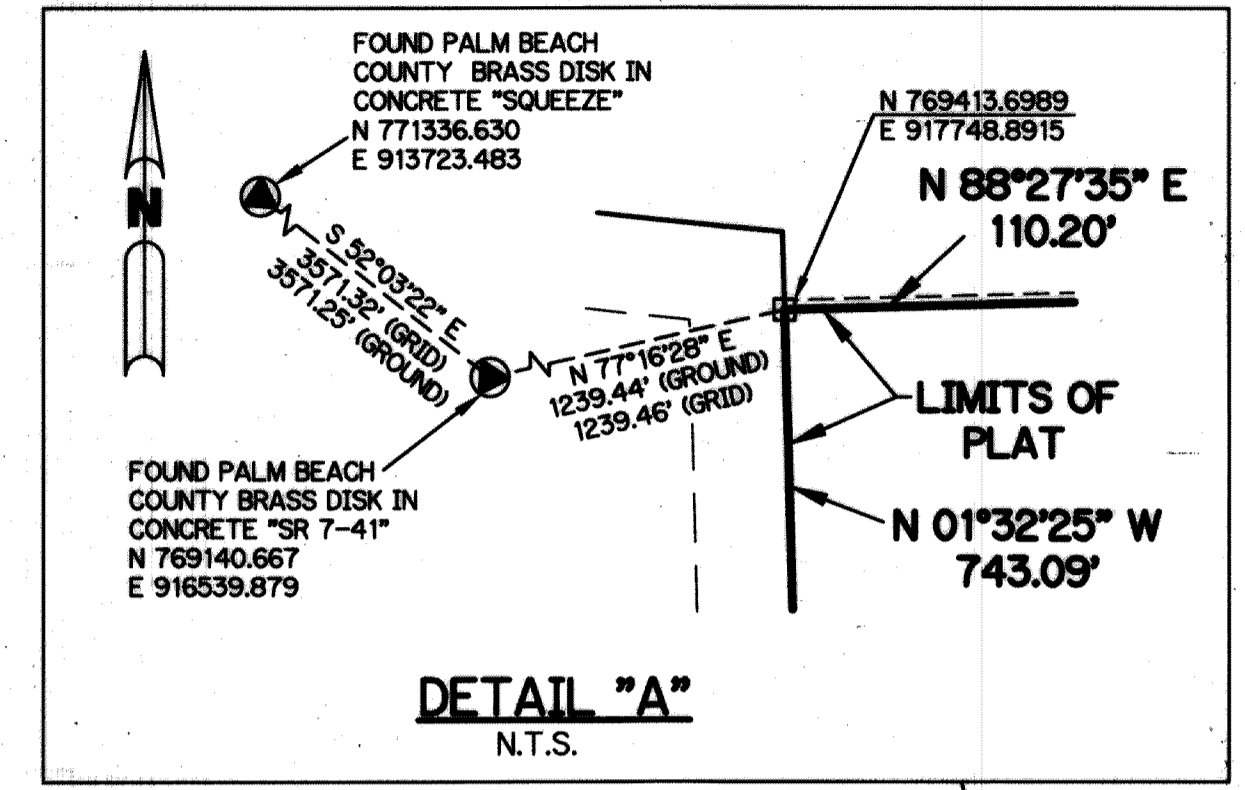


SUSSMAN AGR-PUD NORTH PLAT THREE

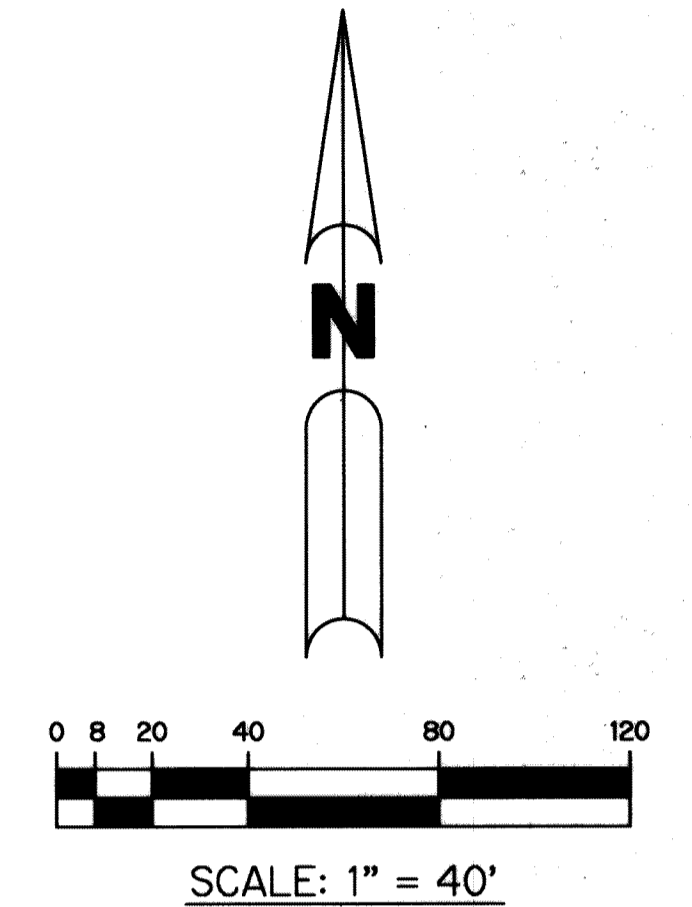
BEING A REPLAT OF A PORTION OF TRACTS 41 THROUGH 45, AND 52 THROUGH 56, ALL IN SECTION 19, TOWNSHIP 46 SOUTH, RANGE 42 EAST, PALM BEACH FARMS COMPANY PLAT NO. 1, ACCORDING TO THE PLAT THEREOF, RECORDED IN PLAT BOOK 2, PAGE 26 OF THE PUBLIC RECORDS OF PALM BEACH COUNTY, FLORIDA.

SHEET 2 OF 5

105



THIS INSTRUMENT WAS PREPARED BY
 PERRY C. WHITE, P.S.M. 4213, STATE OF FLORIDA
 SAND & HILLS SURVEYING, INC.
 8461 LAKE WORTH ROAD, SUITE 410
 LAKE WORTH, FLORIDA 33467
 LB-7741

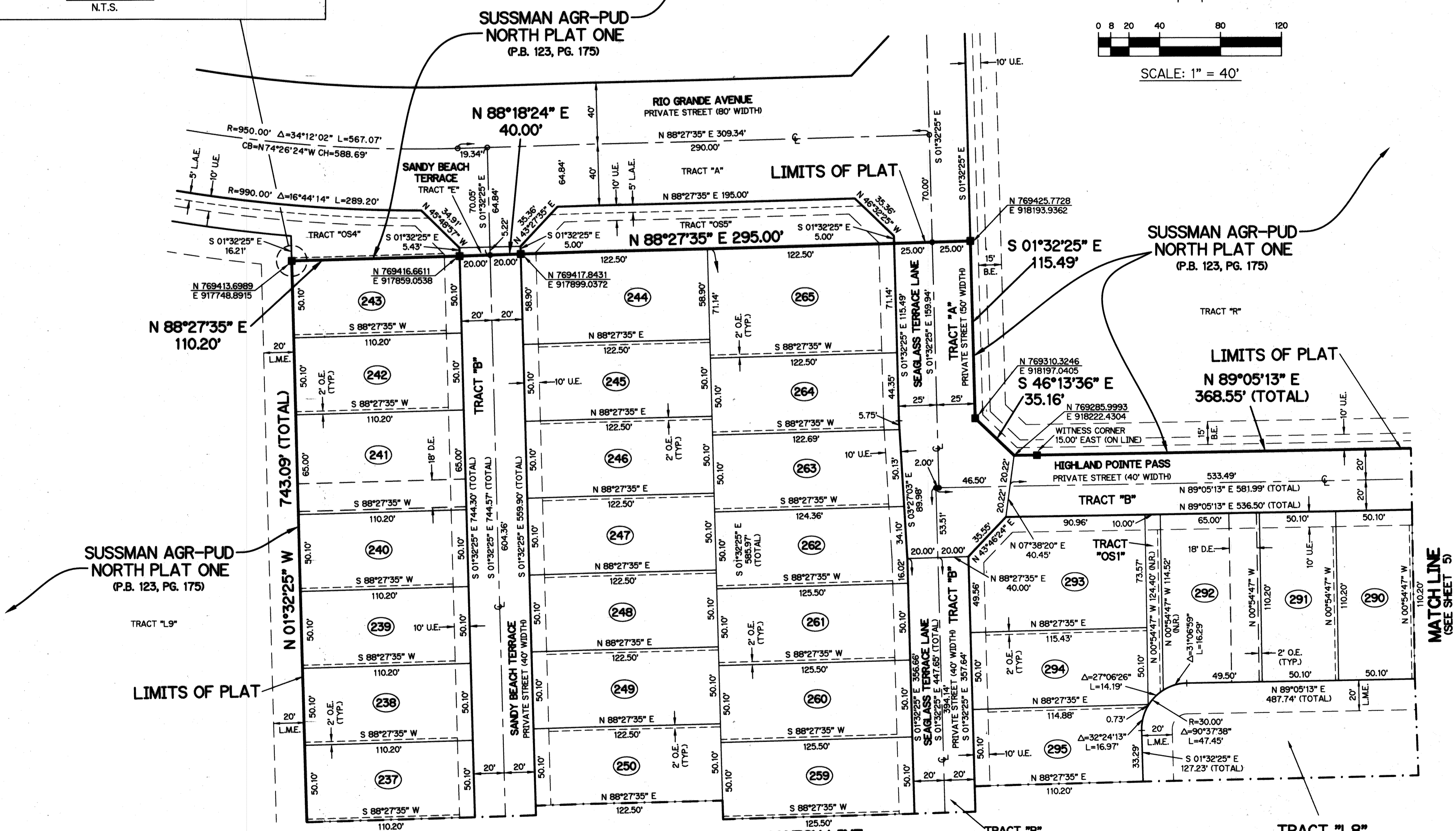


LEGEND:

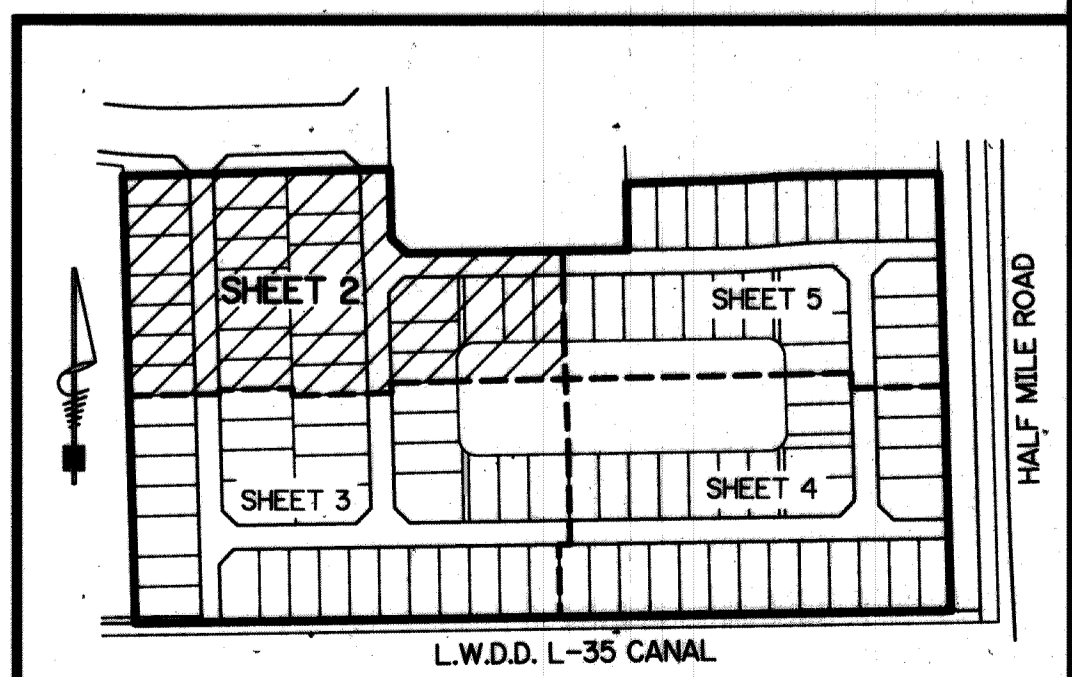
- - SET PERMANENT REFERENCE MONUMENT
4"x4" CONCRETE MONUMENT WITH
1.5" DISK STAMPED L.B. #7741
- - FOUND PERMANENT REFERENCE MONUMENT
4"x4" CONCRETE MONUMENT WITH
1.5" DISK STAMPED L.B. #7741
- - SET PERMANENT CONTROL POINT
NAIL WITH 1.25" DISK STAMPED L.B. #7741
- - FOUND PERMANENT CONTROL POINT
NAIL WITH 1.25" DISK STAMPED L.B. #7741
- AGR - AGRICULTURAL
- Δ - DELTA ANGLE
- B.E. - BUFFER EASEMENT
- CB - CHORD BEARING
- CH - CHORD DISTANCE
- CL - CENTERLINE
- D.B. - DEED BOOK
- D.E. - PRIVATE DRAINAGE EASEMENT
- F.P.L. - FLORIDA POWER & LIGHT
- L - ARC LENGTH
- L.A.E. - LIMITED ACCESS EASEMENT
- L.M.A.E. - LAKE MAINTENANCE ACCESS EASEMENT
- L.M.E. - LAKE MAINTENANCE EASEMENT
- L.W.D.D. - LAKE WORTH DRAINAGE DISTRICT
- N.R. - NOT RADIAL
- N.T.S. - NOT TO SCALE
- O.R.B. - OFFICIAL RECORD BOOK
- O.E. - MAINTENANCE & ROOF OVERHANG EASEMENT
- P.B.C.U.E. - PALM BEACH COUNTY UTILITY EASEMENT
- P.B. - PLAT BOOK
- P.C.P. - PERMANENT CONTROL POINT
- P.D.E. - PUBLIC DRAINAGE EASEMENT
- PG. - PAGE
- P.O.B. - POINT OF BEGINNING
- P.O.C. - POINT OF COMMENCEMENT
- P.S.M. - PROFESSIONAL SURVEYOR AND MAPPER
- P.U.D. - PLANNED UNIT DEVELOPMENT
- R - RADIUS
- RAD - RADIAL
- R.F. - RADIAL TO FRONT LOT LINE
- R.R. - RADIAL TO REAR LOT LINE
- R/W - RIGHT-OF-WAY
- R.D. & D. - ROAD, DYKE AND DITCH RESERVATION
- S.T. - SURVEY TIE
- U.E. - UTILITY EASEMENT
- P.C. - POINT OF CURVATURE
- P.R.C. - POINT OF REVERSE CURVATURE
- P.T. - POINT OF TANGENCY

NOTE:

COORDINATES SHOWN ARE GRID COORDINATES DATUM = NAD 83 (1990 ADJUSTMENT)
 ZONE = FLORIDA EAST ZONE
 LINEAR UNIT = U.S. SURVEY FEET
 COORDINATE SYSTEM = 1983 STATE PLANE TRANSVERSE MERCATOR PROJECTION
 ALL DISTANCES ARE GROUND UNLESS OTHERWISE NOTED
 SCALE FACTOR = 1.0000190
 PLAT BEARING = GRID BEARING
 GROUND DISTANCE X SCALE FACTOR = GRID DISTANCE



MATCH LINE
(SEE SHEET 5)



KEY MAP
N.T.S.

TRACT "L8"
 WATER MANAGEMENT TRACT
 (SUBJECT TO EXISTING LITTORAL ZONE RESTRICTIVE
 COVENANT AGREEMENT AS RECORDED IN O.R.B. 29077, PG.
 13, PUBLIC RECORDS OF PALM BEACH COUNTY, FLORIDA)